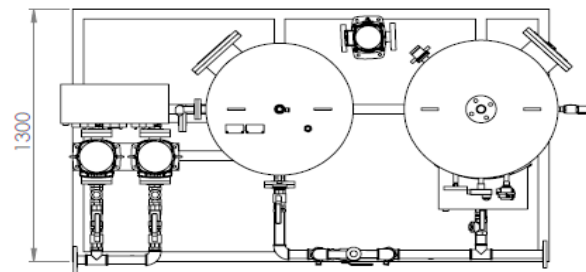
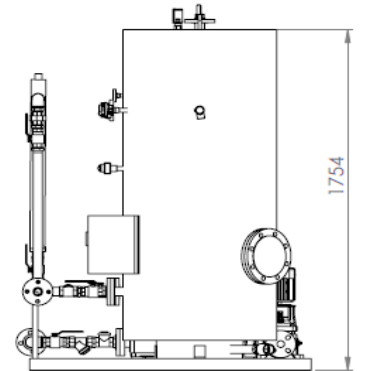
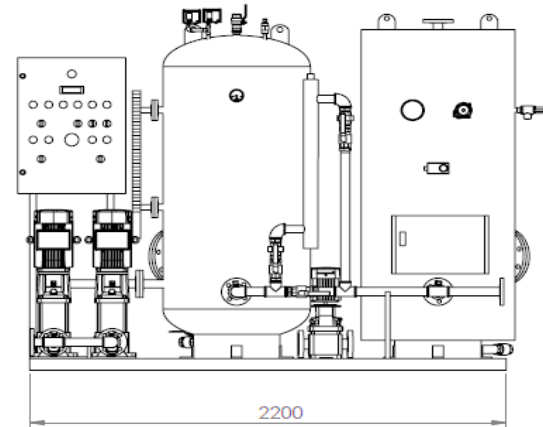




COMPACT FRESH WATER UNIT

★ As Zetmarine Marine Engineering From 2003 until today, many military and commercial water treatment system delivered. With the experience gained by being first in the field in Turkey, quality and speed have been achieved far beyond our competitors. With our solution-focused methods, customer satisfaction is always kept on the front line by reacting promptly to the requests of the customers.



master of water

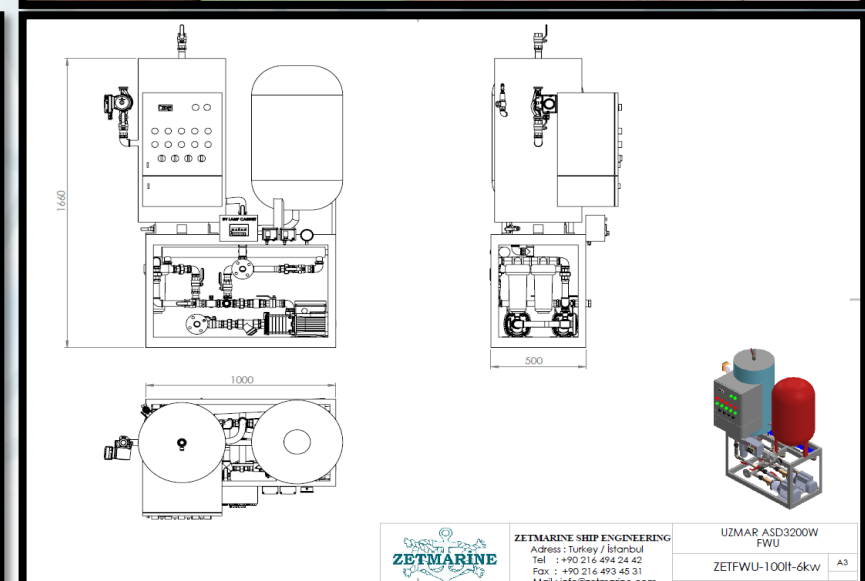
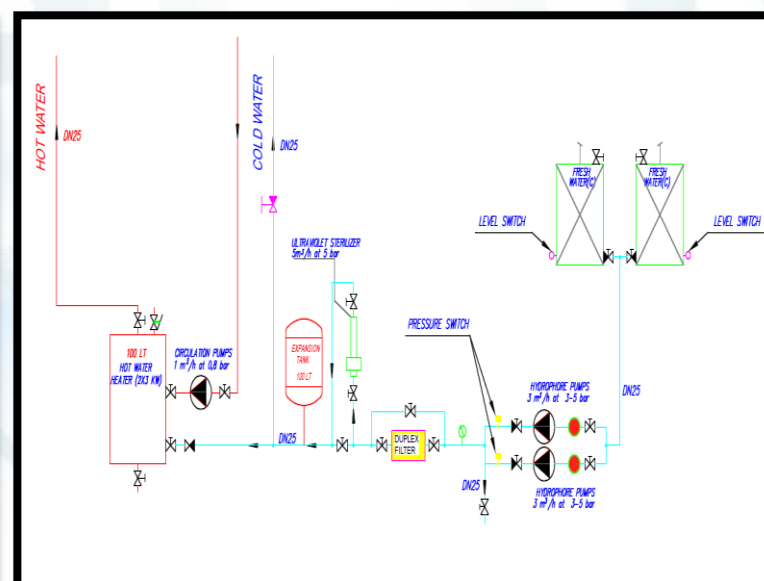
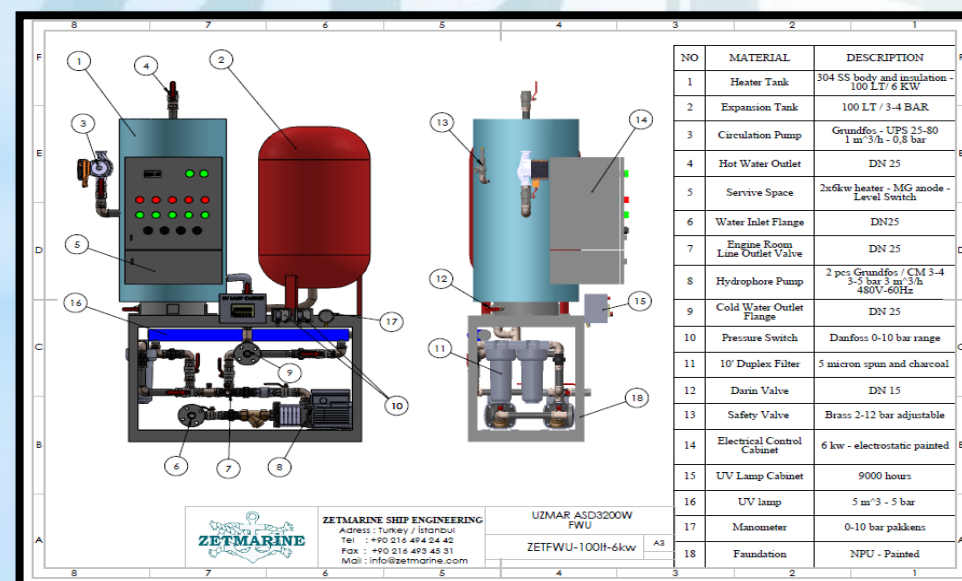


ZETMA MINIMIZED FWU

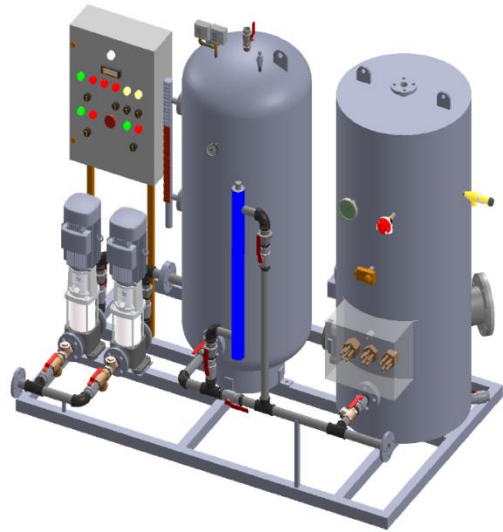


- AISI 304/316 Fittings and Body
- 100-200 LT - 2*3 kw Heater Capacity
- 50-100 lt Expansion Tank
- 2 pcs 5m³/ 5 bar Pump
- 1 pcs circulation Pump
- 1 pcs UV Unit
- 1 pcs 6-20 kw Control Cabinet
- Galvanized/ SS Foundation
- Spare Parts Box

➤ This system is designed to be as modest as possible to minimize space on the ship. It has been successfully applied to all the tug boats built a lots of Shipyards.



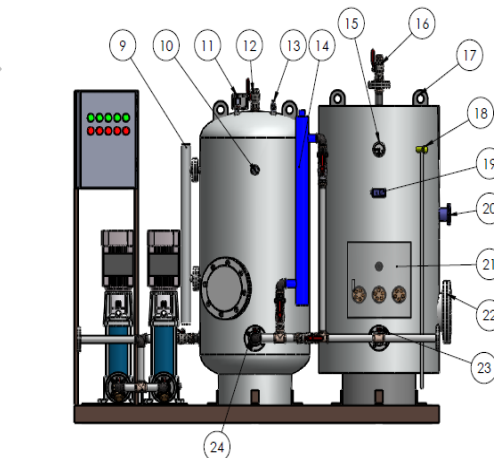
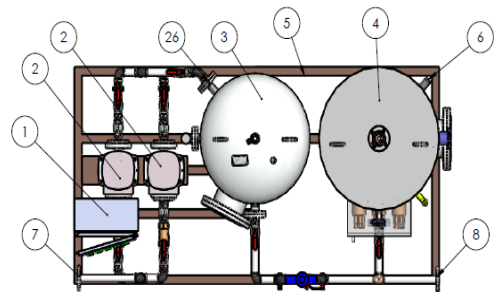
ZETMA CUSTOMIZED FWU



- AISI 304/316 Fittings and Body
- 200/2000 lt - 10/250 kw Heater Capacity
- 200/2000 lt - Hydrophore Tank
- 2 pcs Hydrophore Pump
- 1 pcs Circulation Pump
- 1 pcs UV Unit
- 1 pcs Control Cabinet
- Galvanized/ SS Foundation
- Spare Parts Box



➤ This system, designed as a module, It is manufactured by calculating the capacity according to the number of crew.

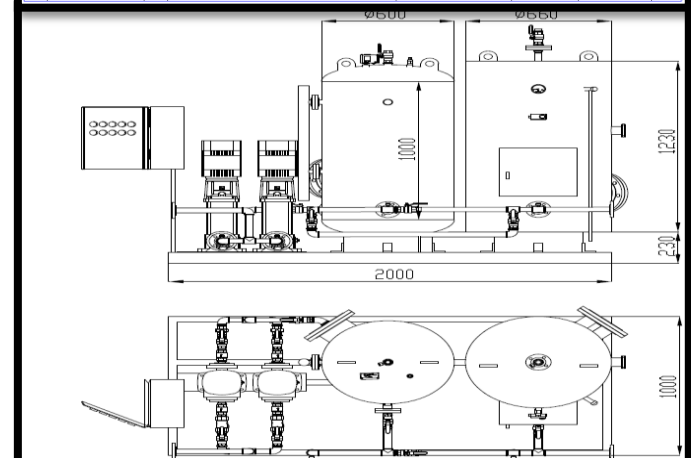
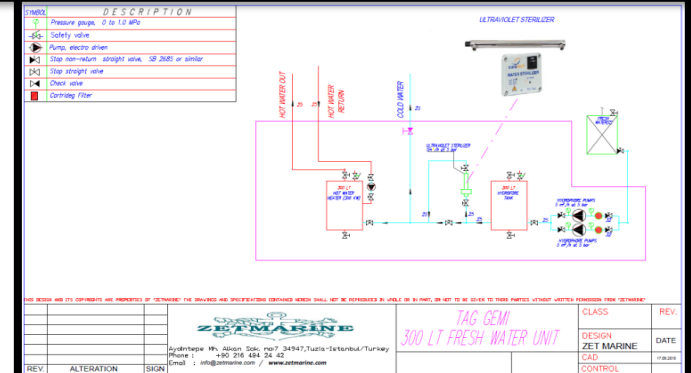
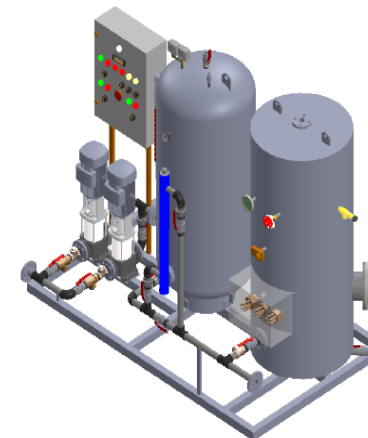
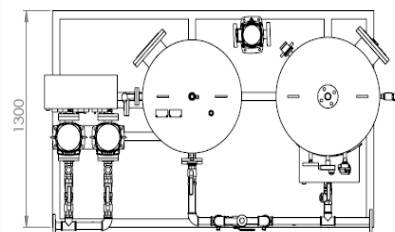
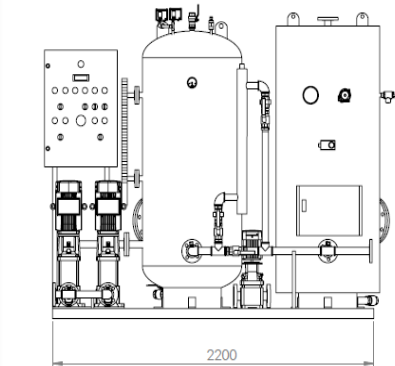


| NO | MATERIAL | DESCRIPTION |
|----|--------------------------|------------------------------------|
| 1 | electric cabinet | - |
| 2 | grundfoss pump | 2.2 kw - 5 BAR - 5 m3 |
| 3 | hydrophore sheet | 304 t: 3 mm |
| 4 | heater sheet | 304 t: 3 mm |
| 5 | foundation | npu80- galvanized |
| 6 | heater circulation inlet | DN 25 - 1 bar pomp |
| 7 | FWU water inlet | DN 25 |
| 8 | FWU cold water outlet | DN 15 |
| 9 | magnetic level gauge | DN 20 - 500 mm |
| 10 | manometre | DN 15 - 0-10 BAR |
| 11 | pressure switch | DN 15 |
| 12 | air inlet | DN 25 |
| 13 | safety valve | DN 15 |
| 14 | UV unit | 5 m3 / h |
| 15 | thermometre | DN 15 - 0-120 C |
| 16 | hot water outlet | DN 25 |
| 17 | eyegolt | - |
| 18 | safety valve | DN 15 |
| 19 | thermostat | DN 15 - adjustable |
| 20 | level gauge | DN 50 |
| 21 | pano | 3 x 6kw resistance-magnesium anode |
| 22 | manhole | DN 150 |
| 23 | heater cold water outlet | DN 25 |
| 24 | hydrophore water outlet | DN 25 |

| | | | | |
|---|--------|---------------------------------------|-------------------------------------|----------|
| AKI BELTİMİSİ SİRCİ BOYUTLAR VE MESURELER YERİ YERİ TOLERANSLAR DOĞRULUK AĞIRLIK | BTİME: | YERİN KURULUŞU PAKİTİNE VE KURU | TEKNIK RESİM ÖZETİ/ÖLÇÜLERİ/NOTLARI | REVİZYON |
| İSİM | İMZA | TARİH | BASIK: | |
| ÇİZİM | | | | |
| ONAY | | | | |
| İMZA | | | | |

ZETMARİNE GEMİ MÜH.

5700 Project FWU Unit



SOME DELIVERY PROJECTS



| | |
|------------|---------------------|
| Shipyard | SELAH |
| Preject No | LDG 1-2 military |
| Capacity | 1000 lt - 150 kw |
| Class | Turkish Loyd |
| Piece | 4 |



| | |
|------------|---------------------------------|
| Shipyard | SANMAR - UZMAR- MEDMARINE |
| Preject No | Hull- 80/155 |
| Capacity | 100 lt - 6 kw |
| Class | ----- |
| Piece | 65 |



| | |
|------------|---------------------|
| Shipyard | A.D.İ.K |
| Preject No | LST-LCT military |
| Capacity | 1000 lt - 150 kw |
| Class | Turkish Loyd |
| Piece | 2 |



| | |
|------------|-------------------|
| Shipyard | SEDEF |
| Preject No | NB 191 |
| Capacity | 250 lt - 20 kw |
| Class | Turkish Loyd |
| Piece | 1 |



| | |
|------------|---------------------|
| Shipyard | BRODO SPLIT |
| Preject No | |
| Capacity | 2000 lt - 220 kw |
| Class | BV |
| Piece | 2 |



| | |
|------------|-------------------|
| Shipyard | HERÇELİK |
| Preject No | 5700 project |
| Capacity | 300 lt - 18 kw |
| Class | Korean Loyd |
| Piece | 2 |

ZETMARINE SHIP ENGINEERING LTD.CO



+90 216 494 24 42



info@zetmarine.com



www.zetmarine.com



Aydintepe Mah.Aydınlı Yolu Üzeri
Kömürcü Sok. No:7
Tuzla/İSTANBUL TURKEY